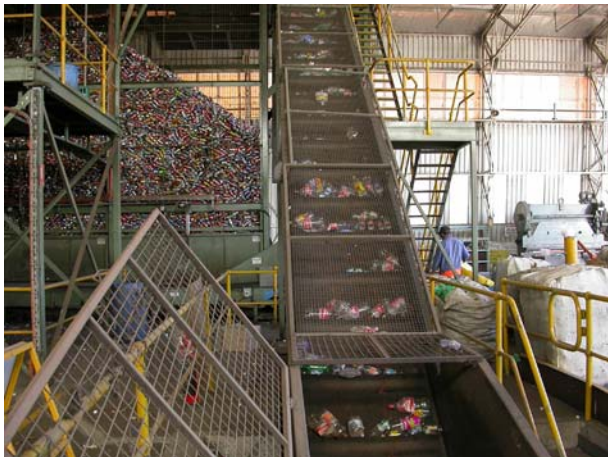


# Statewide Recycling Process



Bottles and cans arrive from collection depots



A conveyor belt takes cans to the silo



PET bottles tumble through the trommel



PET bottles are sorted by size, then weighed



Coloured bottles are separated by hand



Clear and coloured PET is stored in different silos



The baler crushes cans, bottles and cartons



Bales are stored in the factory, ready for transport